

Ultrafuse[®] Filaments

BASF
We create chemistry

FORWARD^{AM}
Innovating Additive Manufacturing

Product Range

Version 1.0 June 2023

STANDARD



PLA

- High success rate
- Biobased



ABS

- Chemical resistance
- Long life span



PET

- Food-approved raw material
- Watertight parts



rPET

- Recycled
- Low carbon footprint

SUPPORT



HiPS

- Easy post-processing
- Adapted to ABS & ASA



BVOH

- Water soluble
- Fast dissolving

ENGINEERING



PC /ABS FR

- UL94 V0 flame retardancy
- Railway classif. EN 45545-2



PP

- Biocompatible
- Chemical resistance



ASA

- Weather resistance
- UV stabilized



ABS Fusion+

- Less warpage
- Heat resistance



PA

- Impact resistance at low temps.
- High mechanical strength



PSPU

- Temp. resistance up to 220 °C
- Railway classif. EN 45545-2



PLA PRO1

- High strength
- Biocompatible

Our experts for Fused Filament Fabrication (FFF) provide you with an extensive range of materials offering a variety of beneficial material properties such as ease of print, dimensional stability, durability, and flexibility. Whether it's standard filaments, filaments for high temperatures and engineering or filaments for temporary support material – our Ultrafuse® product range offers material solutions for all open FFF printing platforms.

FLEXIBLE



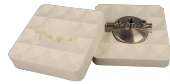
TPU 85A

- Biocompatible
- Resistance to lubricants



TPU 95A

- Abrasion resistance
- Biocompatible



TPU 64D

- Biocompatible
- Very high impact resistance



TPS 90A

- Biocompatible
- Low temperature flexibility

METAL



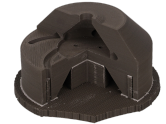
316L

- Easy to use
- Corrosion resistance



17-4 PH

- Heat treatable
- Mechanical strength and hardness



Support Layer

- Excellent contact surface
- Adapted to metal filaments

REINFORCED



PET CF15

- Heat resistance
- High dimensional stability



PC GF30

- UL94 V0 flame retardancy
- Railway classif. EN 45545-2



PP GF30

- Chemical resistance
- Lightweight strong & stiff parts



PA6 GF30

- UV resistance
- Very high stiffness & strength



PAHT CF15

- Temp. resistance
- ESD safe

CONTACT US