

# Ultracur3D<sup>®</sup> Photopolymers

**BASF**  
We create chemistry

**FORWARD**  
Innovating Additive Manufacturing

## Product Range

Version 1.0 June 2023

### RIGID



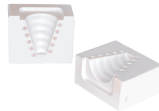
#### RG 35

- Low water uptake
- Biocompatibility



#### RG 1100

- High temperature resistance
- High chemical resistance



#### RG 3280

- Superior stiffness
- Superior temperature performance

### DENTAL



#### DM 2505

- Dental Model
- Water washable



#### DM 2304

- Gingiva mask
- Flexible and soft



#### DMD 1005

- Dental Model
- Large-scale production

### FLEXIBLE



#### FL 300

- Very low hardness (40A)
- Superior elongation at break



#### FL 60

- Low hardness (60A)
- Good haptics



#### EL 60

- Medium hardness (75A)
- Good elastic response



#### EL 150

- Medium hardness (80A)
- High fatigue resistance



#### EL 4000

- High hardness (90A)
- Good rebound

Ultracur3D® reactive urethane photopolymers deliver class-leading performance and consistency to meet your specific application needs while accelerating design iterations and cutting your development costs. Based on BASF's decades of experience in polyurethane research and production, the Forward AM range of advanced photopolymer resins and solutions delivers long-term UV stability and structural performance far superior to conventional photopolymers.

## TOUGH



### ST 45

- High toughness
- Fast printing



### ST 80

- Cost-effective
- UV stability



### ST 1400

- Superior toughness
- Biocompatibility



### ST 7500 G

- Fast and easy to print
- Intricate details

## SUPPLEMENTARY



### Color Kit

- Wide-range of colors possible
- Easy coloring of parts



### Cleaner

- Quickly removes uncured resin
- Compatible with wide-range of resins

## DAYLIGHT



### EPD 1006

- Easy to print
- Ideal for prototyping



### EPD 1086

- Cost-effective
- Multi-purpose



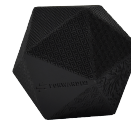
### EPD 2006

- High stiffness
- High temperature resistance



### EPD 3500

- Low water uptake
- Heat resistance



### EPD 4006

- High toughness
- Good durability

## CONTACT US